



PITP β Polyclonal Antibody

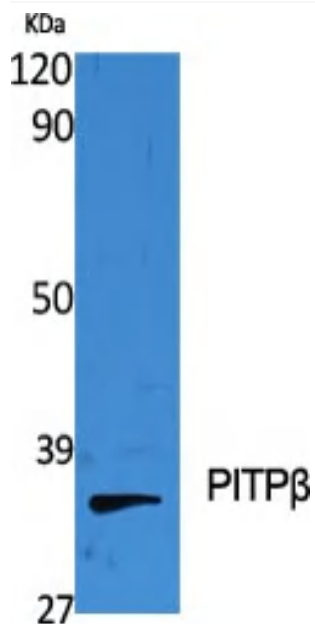
Catalog No	YP-Ab-04091
Isotype	IgG
Reactivity	Human;Mouse;Rat
Applications	WB;ELISA;IHC
Gene Name	PITPNB
Protein Name	Phosphatidylinositol transfer protein beta isoform
Immunogen	The antiserum was produced against synthesized peptide derived from human PITPNB. AA range:20-69
Specificity	PITP β Polyclonal Antibody detects endogenous levels of PITP β protein.
Formulation	Liquid in PBS containing 50% glycerol, 0.5% BSA and 0.02% sodium azide.
Source	Polyclonal, Rabbit,IgG
Purification	The antibody was affinity-purified from rabbit antiserum by affinity-chromatography using epitope-specific immunogen.
Dilution	WB 1:500-2000;IHC-p 1:50-300; ELISA 2000-20000
Concentration	1 mg/ml
Purity	$\geq 90\%$
Storage Stability	-20°C/1 year
Synonyms	PITPNB; Phosphatidylinositol transfer protein beta isoform; PI-TP-beta; PtdIns transfer protein beta; PtdInsTP beta
Observed Band	32kD
Cell Pathway	Golgi apparatus . Golgi apparatus membrane . Endoplasmic reticulum membrane .
Tissue Specificity	Widely expressed in various tissues including brain.
Function	function:Catalyzes the transfer of PtdIns and phosphatidylcholine between membranes.,PTM:Constitutive phosphorylation of Ser-262 has no effect on phospholipid transfer activity but is required for Golgi targeting.,similarity:Belongs to the PtdIns transfer protein family. Class I subfamily.,tissue specificity:Widely expressed in various tissues including brain.,
Background	This gene encodes a cytoplasmic protein that catalyzes the transfer of phosphatidylinositol and phosphatidylcholine between membranes. This transfer activity is required for COPI complex-mediated retrograde transport from the Golgi apparatus to the endoplasmic reticulum. Alternative splicing of this gene results in multiple transcript variants. [provided by RefSeq, Sep 2013],
matters needing attention	Avoid repeated freezing and thawing!



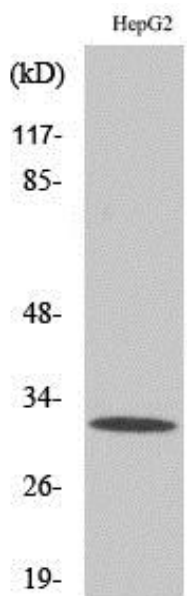
Usage suggestions

This product can be used in immunological reaction related experiments. For more information, please consult technical personnel.

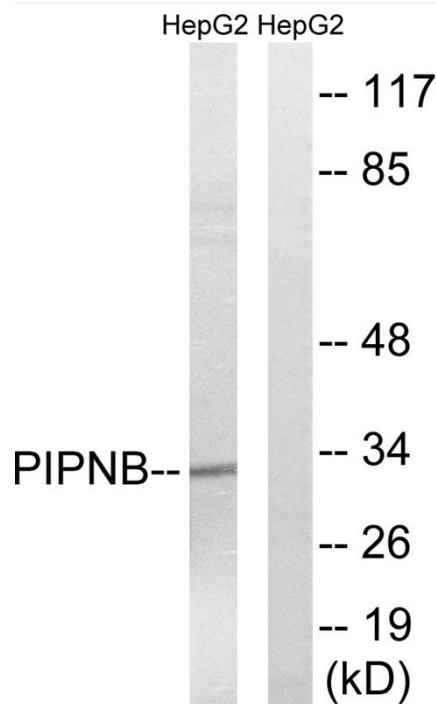
Products Images



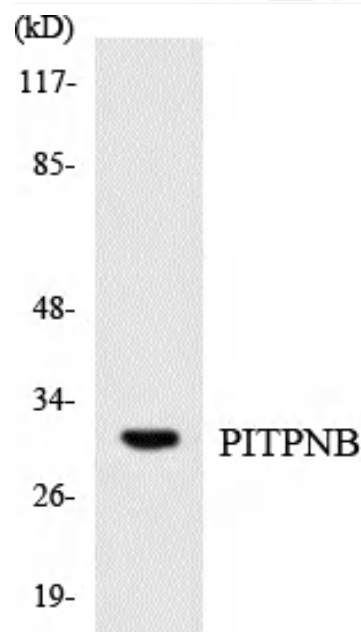
Western Blot analysis of various cells using PITP β Polyclonal Antibody diluted at 1:2000



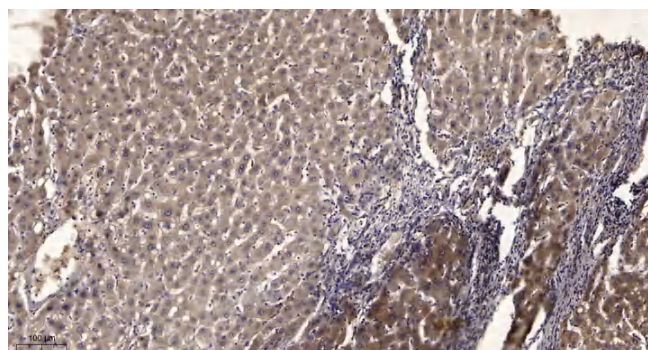
Western Blot analysis of HepG2 cells using PITP β Polyclonal Antibody diluted at 1:2000



Western blot analysis of lysates from HepG2 cells, using PITPNB Antibody. The lane on the right is blocked with the synthesized peptide.



Western blot analysis of the lysates from K562 cells using PITPNB antibody.



Immunohistochemical analysis of paraffin-embedded human liver cancer. 1, Antibody was diluted at 1:200(4° overnight). 2, Tris-EDTA,pH9.0 was used for antigen retrieval. 3,Secondary antibody was diluted at 1:200(room temperature, 45min).